

Daily Insights

Pemex Unveils More Aggressive Discount Program for Fuels Contracts

Pemex will reconfigure its discount program for gasoline and diesel marketers in October, offering steeper discounts to defend its market share.

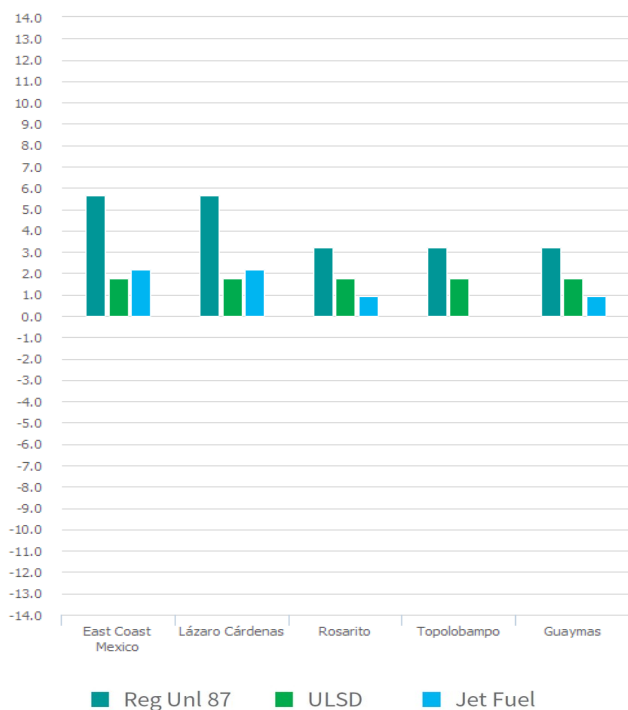
U.S. West Coast Refinery Utilization Rates Climb to Highest Since March: EIA

Utilization rates at U.S. West Coast refineries advanced to the highest seen in nearly six months, according to data from the U.S. Energy Information Administration (EIA).

NYMEX Overview: A Perfect Storm of Data to Boost Crude, RBOB Prices

Wednesday's U.S. federal inventory report, combined with Hurricane Sally's impact on Gulf Coast output, provided the boost needed to propel oil prices to a second day of significant gains.

Landed Spot Daily Price Changes US ¢/GAL



Daily Benchmarks Snapshots

WATERBORNE LANDED SPOT PRICES

PRODUCT	SOURCE	US¢/GAL		MXN\$/L	
		MEAN	+/-	MEAN	+/-
EAST COAST MEXICO					
Reg Unl 87	USGC	116.592	5.67	6.489	0.32
Prem Unl 91	USGC	121.259	5.55	6.749	0.31
ULSD	USGC	103.077	1.78	5.737	0.10
Jet Fuel	USGC	102.734	2.20	5.718	0.12
LÁZARO CÁRDENAS					
Reg Unl 87	USGC	121.803	5.67	6.779	0.32
Prem Unl 91	USGC	126.470	5.55	7.039	0.31
ULSD	USGC	108.957	1.78	6.064	0.10
Jet Fuel	USGC	108.242	2.20	6.025	0.12
ROSARITO					
Reg Unl 87	LA	129.360	3.19	7.200	0.18
Prem Unl 91	LA	139.138	3.19	7.744	0.18
ULSD	LA	110.869	1.78	6.171	0.10
Jet Fuel	LA	102.163	0.95	5.686	0.05
TOPOLOBAMPO					
Reg Unl 87	LA	129.922	3.19	7.231	0.18
Prem Unl 91	LA	139.700	3.19	7.776	0.18
ULSD	LA	111.504	1.78	6.206	0.10
GUAYMAS					
Reg Unl 87	LA	129.922	3.19	7.231	0.18
Prem Unl 91	LA	139.700	3.19	7.776	0.18
ULSD	LA	111.504	1.78	6.206	0.10
Jet Fuel	LA	102.758	0.95	5.719	0.05

Daily Wholesale Snapshot

PEMEX TERMINAL POSTED PRICES

TERMINAL	MXN\$/L			
	REG UNL	+/-	ULSD	+/-
Monterrey (Cadereyta)	16.260	0.003	16.493	-0.035
Guadalajara (Zapopan)	16.703	0.002	16.830	-0.035
Mexico City (Añil)	16.228	0.002	16.396	-0.035
San Luis Potosí	16.117	0.093	16.368	-0.035
Querétaro	16.496	0.093	16.757	-0.035
Veracruz	15.397	0.093	15.649	-0.035
Tula	16.300	0.093	16.551	-0.035

Exchange Rate

USD \$ → MXN \$

21.0692

Pemex Unveils More Aggressive Discount Program for Fuels Contracts

Pemex will reconfigure its discount program for gasoline and diesel marketers in October, offering steeper discounts to defend its market share.

The revised discount program starting Oct. 1 reduces the spread between imports and domestic supply that incentivized imports and comes with a push for contract renewals as Pemex tries to protect market share, said Mario Guido, founding partner of El Paso, Texas-based consultancy firm Strategic Business Development.

"They are looking to reduce imports from private companies to continue strengthening Pemex moving forward," Guido said, adding that the Mexican state-owned company will discount aggressively in areas where private importers have strong presences.

The policy by Pemex falls in line with the current administration's goal to strengthen the national oil company, said Paulina Gallardo, IHS Markit senior research analyst for the Americas. OPIS is a subsidiary of IHS Markit.

"They have been very adamant about taking back market share that they have lost," Gallardo said.

The steeper discounts and the lack of storage space in the country for private importers can be advantages for Pemex in battling private imports and targeting large suppliers and branded stations, she said.

The extent of the discount will vary by contract length, but the October discounts will be based on the amount of time remaining on the contract, not the original term of the contract. In the case of contracts of three or more years that have a year or less remaining, those contracts will receive a discount commensurate with a one-year contract unless they are renewed at a longer term.

The structure to base discounts on remaining terms of contracts instead of contract length constitutes a key piece of Pemex's strategy to secure contract renewals, with the credit the company offers also representing an advantage over the private suppliers who ask for cash, Guido said.

The revised discount program will divide the country into 10 regions, with those regions carrying different volume thresholds for different discount levels in those regions.

"It shows they have put more thought into what the market really is right now," Gallardo said of the plan to provide different volume tiers across the regions.

Regular gasoline will see heavier discounts compared to the movement in premium gasoline and diesel.

The October discounts will be as much as 920 pesos, or roughly \$43, per cubic meter (264 gallons) for regular gasoline, compared to a maximum of 900 pesos per cubic meter in discounts offered for the second half of September, according to a document from Pemex dated Tuesday. Additionally, all volume tiers will receive discounts starting in October.

For regular gasoline, current discounts range from no discount to

TABLE OF CONTENTS

Waterborne Landed Spot Gasoline Prices	4
Waterborne Landed Spot Distillates Prices	5
Rail Landed Spot Prices	5
Oxygenates Landed Spot Prices	5
Mexico Freight Rates	6
Shipping Notes	6
OPIS Renewable Volume Obligation	6
Mexico's IEPS Fiscal Stimulus	6
Pemex Wholesale Prices	7
OPIS Regional Refined Products Heat Maps	8

405 pesos per cubic meter on one-year contracts, from 65 pesos per cub meter to 641 pesos per cubic meters on two-year deals and from 131 pesos per cubic meter to 900 pesos per cubic meter on three-year terms.

The revised discounts on regular gasoline will range from 324 pesos per cubic meter to 736 pesos per cubic meter for one-year deals, from 215 pesos per cubic meter to 828 pesos per cubic meter on two-year contracts and from 239 pesos per cubic meter to 920 pesos per cubic meter on agreements of three or more years.

Diesel discounts in October will reach a maximum of 1,150 pesos per cubic meter (\$54), compared to a maximum of 1,140 pesos per cubic meter for the second half of September.

Diesel discounts currently range from no discount to 513 pesos per cubic meter on one-year contracts, 47 pesos per cubic meter to 812 pesos per cubic meter on two-year deals and 93 pesos per cubic meter to 1,140 pesos per cubic meter on agreements of three years or more.

Discounts in October will span from 340 pesos per cubic meter to 920 pesos per cubic meter on one-year deals, 383 pesos per cubic meter to 1,035 pesos per cubic meter for two-year contracts and 426 pesos per liter to 1,150 pesos per liter for deals of three years or more.

Premium gasoline discounts will run as high as 840 pesos per cubic meter (\$39), down from a high of 860 pesos per cubic meter currently.

Discounts on premium gasoline currently span from no discount to 387 pesos per cubic meter on one-year deals, 59 pesos per cubic meter to 613 pesos per cubic meter on two-year contracts and 117 pesos per cubic meter to 860 pesos per cubic meter on contracts of three-plus years.

Those discount ranges will increase in October to 110 pesos per cubic meter to 677 pesos per cubic meter on one-year contracts, 124 pesos per cubic meter to 762 pesos per cubic meter on two-year deals, and 138 pesos per cubic meter to 846 pesos per cubic meter on contracts of three years or more.

The discounts reach their steepest levels along the northern border,

at the east coast of Mexico and in the central region around Mexico City and the Bajío regions, areas with easier access to imports or with significant levels of fuel demand. The regions in the southeast and the Yucatan peninsula have lesser discounts compared to border and central regions.

Pemex's market share in gasoline and diesel dropped to record lows in July, down to 83.8% and 68.9% respectively, OPIS reported last month.

--Reporting by Justin Schneewind, jschneewind@opisnet.com;
Editing by Barbara Chuck, bchuck@opisnet.com

U.S. West Coast Refinery Utilization Rates Climb to Highest Since March: EIA

Utilization rates at U.S. West Coast refineries advanced to the highest seen in nearly six months, according to data from the U.S. Energy Information Administration (EIA).

For the week ending Sept. 11, PADD5 refinery utilization rates rose to 74.1%, from 71.8% the week prior. The last time rates were seen that high was the last week of March. Utilization rates remain suppressed in response to coronavirus disease 2019 (COVID-19) and trailed year-ago rates of 88.4%.

Gasoline stockpiles on the West Coast edged 200,000 bbl higher, to 29.6 million bbl last week, placing them 1 million bbl above year-ago levels. PADD5 gasoline imports were reduced to just 1,000 b/d, down from 51,000 b/d the week prior.

Conversely, jet fuel imports increased last week, expanding from 77,000 b/d to 100,000 b/d. IHS Markit Market Intelligence Network (MINT) ship tracking data and independent ship broker data indicates a trio of jet fuel cargoes arriving in PADD5 over the next 10 days. The vessel Zephyros is expected to reach Long Beach later today; Esteem Houston into Los Angeles on Monday, and Marlin Ametrine into Nikiski, Alaska, next Thursday. Another jet fuel cargo is slated to arrive in L.A. on the vessel Morning Glory on Oct. 3.

IHS Markit is the parent company of OPIS.

West Coast jet fuel stockpiles were flat week on week, holding at 9.6 million bbl, which was down 500,000 b/d from the same week last year, this morning's EIA report showed.

Distillate stockpiles in PADD5 bounded 900,000 bbl higher for the week, to 13.5 million bbl last week, versus 12.4 million bbl a year ago.

Despite a week-on-week dip of 1.3 million bbl, West Coast crude supplies of 53.1 million bbl last week continued to hold a hefty lead on year-ago levels of 44.6 million bbl.

--Reporting by Kylee West, kwest@opisnet.com; Editing by Bayan Raji, braji@opisnet.com

NYMEX Overview: A Perfect Storm of Data to Boost Crude, RBOB Prices

Wednesday's U.S. federal inventory report, combined with Hurricane Sally's impact on Gulf Coast output, provided the boost needed to propel oil prices to a second day of significant gains.

The U.S. Energy Information Administration reported that U.S. crude stocks fell 4.4 million bbl, putting them at 496 million bbl. While 14% above seasonal averages, the level is also the lowest since April, and the draw confounded forecasts that inventories would rise again this week. Team that with production shut-ins and expected transportation delays due to Sally's landfall early Wednesday on the eastern Gulf Coast shoreline, and they were enough to send the October contract for U.S. benchmark West Texas Intermediate crude oil up \$1.88 during the regular NYMEX session, to end at \$40.16/bbl. It was the first time since Sept. 3 that the front-month contract has settled above the \$40/bbl mark, where it had been comfortably if not firmly ensconced through most of the summer.

Energy futures also got a late-session boost from the U.S. Federal Reserve, which announced Wednesday afternoon that it would likely keep interest rates at near zero through the next three years. A 300pt-plus gain for the Dow Jones Industrial Average soon fizzled, but the gains for WTI have held -- and increased by about 5cts/bbl -- in electronic trading after settlement. October ICE Brent crude, which rose \$1.69, to settle at \$42.22/bbl, is seeing late-afternoon gains of more than a dime.

Another surprise in the EIA numbers was the report of a 400,000-bbl draw in gasoline stocks. Anecdotal evidence on the ground -- and the preliminary result of OPIS' weekly survey of retailers nationwide -- indicated that demand had weakened in the last week. But while that weakness might show up in the next EIA report, Wednesday's data gave October RBOB futures a 5.08cts boost, to \$1.1889/gal. With gasoline inventories at reasonable levels -- only 3% over seasonal averages according to EIA -- it's not surprising that RBOB has continued to rise into the evening, gaining more than 80pts.

ULSD futures were the odd man out Wednesday, with EIA data showing distillate inventories rising by 3.5 million bbl. With stocks 22% over seasonal averages, Sally's impact on supply is more of an afterthought. Still, front-month ULSD futures managed to add 1.7cts, to \$1.1163/gal -- a good gain unless compared to increases seen during the session in other parts of the energy futures complex.

Still, prices are managing to continue making small gains in the 5pt range heading into the evening. Even with such a backlog of inventory, ULSD prices have risen in each of the last five sessions.

--Reporting by Steve Cronin, scronin@opisnet.com; Editing by Barbara Chuck, bchuck@opisnet.com

Waterborne Landed Spot Gasoline Prices

PRODUCT	SOURCE	ZONE	RVP	RVP DIFF		OCTANE DIFF		US\$/GAL				MXNS/L			
				cts/gal	p/l	cts/gal	p/l	LOW	HIGH	MEAN	+/-	LOW	HIGH	MEAN	+/-
EAST COAST MEXICO															
Reg Unl 87	USGC	North	10.0	1.61	0.09	-	-	116.44	116.74	116.592	5.67	6.48	6.50	6.489	0.32
Prem Unl 91	USGC	North	10.0	1.61	0.09	4.67	0.26	121.11	121.41	121.259	5.55	6.74	6.76	6.749	0.31
Reg Unl 87	USGC	Southeast	10.0	1.61	0.09	-	-	116.44	116.74	116.592	5.67	6.48	6.50	6.489	0.32
Prem Unl 91	USGC	Southeast	10.0	1.61	0.09	4.67	0.26	121.11	121.41	121.259	5.55	6.74	6.76	6.749	0.31
Reg Unl 87	USGC	Center	10.0	1.61	0.09	-	-	116.44	116.74	116.592	5.67	6.48	6.50	6.489	0.32
Prem Unl 91	USGC	Center	10.0	1.61	0.09	4.67	0.26	121.11	121.41	121.259	5.55	6.74	6.76	6.749	0.31
Reg Unl 87	USGC	Pacific	10.0	1.61	0.09	-	-	116.44	116.74	116.592	5.67	6.48	6.50	6.489	0.32
Prem Unl 91	USGC	Pacific	10.0	1.61	0.09	4.67	0.26	121.11	121.41	121.259	5.55	6.74	6.76	6.749	0.31
Reg Unl 87	USGC	Mexico City	7.8	3.85	0.21	-	-	118.69	118.99	118.838	5.70	6.61	6.62	6.614	0.32
Prem Unl 91	USGC	Mexico City	7.8	3.85	0.21	4.67	0.26	123.35	123.65	123.504	5.58	6.87	6.88	6.874	0.31
Reg Unl 87	USGC	Guadalajara	7.8	3.85	0.21	-	-	118.69	118.99	118.838	5.70	6.61	6.62	6.614	0.32
Prem Unl 91	USGC	Guadalajara	7.8	3.85	0.21	4.67	0.26	123.35	123.65	123.504	5.58	6.87	6.88	6.874	0.31
LÁZARO CÁRDENAS															
Reg Unl 87	USGC	Center	10.0	1.61	0.09	-	-	121.65	121.95	121.803	5.67	6.77	6.79	6.779	0.32
Prem Unl 91	USGC	Center	10.0	1.61	0.09	4.67	0.26	126.32	126.62	126.470	5.55	7.03	7.05	7.039	0.31
Reg Unl 87	LA	Center	10.0	-1.39	-0.08	7.33	0.41	129.98	130.98	130.485	3.19	7.23	7.29	7.263	0.18
Prem Unl 91	LA	Center	10.0	-1.39	-0.08	17.11	0.95	139.76	140.76	140.262	3.19	7.78	7.83	7.807	0.18
Reg Unl 87	PNW	Center	10.0	2.40	0.13	8.88	0.49	136.31	137.31	136.811	9.71	7.59	7.64	7.615	0.54
Prem Unl 91	PNW	Center	10.0	2.40	0.13	20.71	1.15	148.14	149.14	148.644	9.71	8.25	8.30	8.273	0.54
Reg Unl 87	USGC	Pacific	10.0	1.61	0.09	-	-	121.65	121.95	121.803	5.67	6.77	6.79	6.779	0.32
Prem Unl 91	USGC	Pacific	10.0	1.61	0.09	4.67	0.26	126.32	126.62	126.470	5.55	7.03	7.05	7.039	0.31
Reg Unl 87	LA	Pacific	10.0	-1.39	-0.08	7.33	0.41	129.98	130.98	130.485	3.19	7.23	7.29	7.263	0.18
Prem Unl 91	LA	Pacific	10.0	-1.39	-0.08	17.11	0.95	139.76	140.76	140.262	3.19	7.78	7.83	7.807	0.18
Reg Unl 87	PNW	Pacific	10.0	2.40	0.13	8.88	0.49	136.31	137.31	136.811	9.71	7.59	7.64	7.615	0.54
Prem Unl 91	PNW	Pacific	10.0	2.40	0.13	20.71	1.15	148.14	149.14	148.644	9.71	8.25	8.30	8.273	0.54
Reg Unl 87	USGC	Guadalajara	7.8	3.85	0.21	-	-	123.90	124.20	124.048	5.70	6.90	6.91	6.904	0.32
Prem Unl 91	USGC	Guadalajara	7.8	3.85	0.21	4.67	0.26	128.57	128.87	128.715	5.58	7.16	7.17	7.164	0.31
Reg Unl 87	LA	Guadalajara	7.8	1.61	0.09	7.33	0.41	132.98	133.98	133.482	3.13	7.40	7.46	7.429	0.17
Prem Unl 91	LA	Guadalajara	7.8	1.61	0.09	17.11	0.95	142.76	143.76	143.259	3.13	7.95	8.00	7.974	0.17
Reg Unl 87	PNW	Guadalajara	7.8	5.75	0.32	8.88	0.49	139.67	140.67	140.166	9.92	7.77	7.83	7.802	0.55
Prem Unl 91	PNW	Guadalajara	7.8	5.75	0.32	20.71	1.15	151.50	152.50	151.999	9.92	8.43	8.49	8.460	0.55
ROSARITO															
Reg Unl 87	USGC	Pacific	10.0	1.61	0.09	-	-	122.78	123.08	122.928	5.67	6.83	6.85	6.842	0.32
Prem Unl 91	USGC	Pacific	10.0	1.61	0.09	4.67	0.26	127.44	127.74	127.594	5.55	7.09	7.11	7.102	0.31
Reg Unl 87	LA	Pacific	10.0	-1.39	-0.08	7.33	0.41	128.86	129.86	129.360	3.19	7.17	7.23	7.200	0.18
Prem Unl 91	LA	Pacific	10.0	-1.39	-0.08	17.11	0.95	138.64	139.64	139.138	3.19	7.72	7.77	7.744	0.18
Reg Unl 87	PNW	Pacific	10.0	2.40	0.13	8.88	0.49	135.19	136.19	135.686	9.71	7.52	7.58	7.552	0.54
Prem Unl 91	PNW	Pacific	10.0	2.40	0.13	20.71	1.15	147.02	148.02	147.519	9.71	8.18	8.24	8.211	0.54
GUAYMAS															
Reg Unl 87	USGC	Pacific	10.0	1.61	0.09	-	-	122.22	122.52	122.365	5.67	6.80	6.82	6.811	0.32
Prem Unl 91	USGC	Pacific	10.0	1.61	0.09	4.67	0.26	126.88	127.18	127.032	5.55	7.06	7.08	7.070	0.31
Reg Unl 87	LA	Pacific	10.0	-1.39	-0.08	7.33	0.41	129.42	130.42	129.922	3.19	7.20	7.26	7.231	0.18
Prem Unl 91	LA	Pacific	10.0	-1.39	-0.08	17.11	0.95	139.20	140.20	139.700	3.19	7.75	7.80	7.776	0.18
Reg Unl 87	PNW	Pacific	10.0	2.40	0.13	8.88	0.49	135.75	136.75	136.248	9.71	7.56	7.61	7.583	0.54
Prem Unl 91	PNW	Pacific	10.0	2.40	0.13	20.71	1.15	147.58	148.58	148.082	9.71	8.21	8.27	8.242	0.54
TOPOLOBAMPO															
Reg Unl 87	USGC	Pacific	10.0	1.61	0.09	-	-	122.22	122.52	122.365	5.67	6.80	6.82	6.811	0.32
Prem Unl 91	USGC	Pacific	10.0	1.61	0.09	4.67	0.26	126.88	127.18	127.032	5.55	7.06	7.08	7.070	0.31
Reg Unl 87	LA	Pacific	10.0	-1.39	-0.08	7.33	0.41	129.42	130.42	129.922	3.19	7.20	7.26	7.231	0.18
Prem Unl 91	LA	Pacific	10.0	-1.39	-0.08	17.11	0.95	139.20	140.20	139.700	3.19	7.75	7.80	7.776	0.18
Reg Unl 87	PNW	Pacific	10.0	2.40	0.13	8.88	0.49	135.75	136.75	136.248	9.71	7.56	7.61	7.583	0.54
Prem Unl 91	PNW	Pacific	10.0	2.40	0.13	20.71	1.15	147.58	148.58	148.082	9.71	8.21	8.27	8.242	0.54

Waterborne Landed Spot Distillates Prices

PRODUCT	SOURCE	US\$/gal				MXN\$/L			
		LOW	HIGH	MEAN	CHANGE	LOW	HIGH	MEAN	CHANGE
EAST COAST MEXICO									
ULSD	USGC	103.03	103.13	103.077	1.78	5.73	5.74	5.737	0.10
Jet Fuel	USGC	101.86	103.61	102.734	2.20	5.67	5.77	5.718	0.12
LÁZARO CÁRDENAS									
ULSD	USGC	108.91	109.01	108.957	1.78	6.06	6.07	6.064	0.10
ULSD	LA	111.64	112.64	112.138	1.78	6.21	6.27	6.242	0.10
ULSD	PNW	108.14	109.14	108.638	2.28	6.02	6.07	6.047	0.13
Jet Fuel	USGC	107.37	109.12	108.242	2.20	5.98	6.07	6.025	0.12
Jet Fuel	LA	102.85	103.85	103.352	0.95	5.72	5.78	5.753	0.05
Jet Fuel	PNW	109.60	110.60	110.102	0.95	6.10	6.16	6.128	0.05
ROSARITO									
ULSD	USGC	110.18	110.28	110.227	1.78	6.13	6.14	6.135	0.10
ULSD	LA	110.37	111.37	110.869	1.78	6.14	6.20	6.171	0.10
ULSD	PNW	106.87	107.87	107.369	2.28	5.95	6.00	5.976	0.13
Jet Fuel	USGC	108.56	110.31	109.431	2.20	6.04	6.14	6.091	0.12
Jet Fuel	LA	101.66	102.66	102.163	0.95	5.66	5.71	5.686	0.05
Jet Fuel	PNW	108.41	109.41	108.913	0.95	6.03	6.09	6.062	0.05
GUAYMAS									
ULSD	USGC	109.54	109.64	109.592	1.78	6.10	6.10	6.100	0.10
ULSD	LA	111.00	112.00	111.504	1.78	6.18	6.23	6.206	0.10
ULSD	PNW	107.50	108.50	108.004	2.28	5.98	6.04	6.011	0.13
Jet Fuel	USGC	107.96	109.71	108.837	2.20	6.01	6.11	6.058	0.12
Jet Fuel	LA	102.26	103.26	102.758	0.95	5.69	5.75	5.719	0.05
Jet Fuel	PNW	109.01	110.01	109.508	0.95	6.07	6.12	6.095	0.05
TOPOLOBAMPO									
ULSD	USGC	109.54	109.64	109.592	1.78	6.10	6.10	6.100	0.10
ULSD	LA	111.00	112.00	111.504	1.78	6.18	6.23	6.206	0.10
ULSD	PNW	107.50	108.50	108.004	2.28	5.98	6.04	6.011	0.13

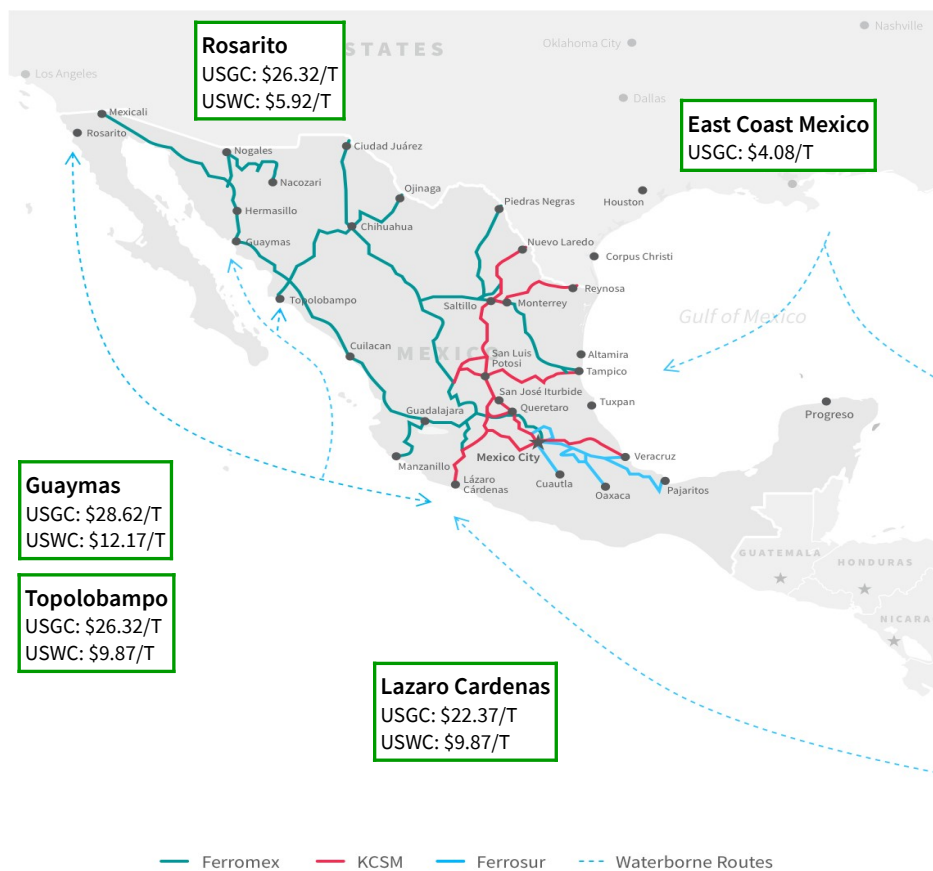
Rail Landed Spot Refined Products Prices (manifest)

PRODUCT	SOURCE	DELIVERY	RVP	RVP DIFF		OCTANE DIFF		US\$/gal				MXN\$/L			
				cts/gal	p/l	cts/gal	p/l	LOW	HIGH	MEAN	+/-	LOW	HIGH	MEAN	+/-
Reg Unl 87	Houston	Brownsville	10.0	1.61	0.09	-	-	129.66	129.96	129.807	5.63	7.22	7.23	7.225	0.31
Prem Unl 91	Houston	Brownsville	10.0	1.61	0.09	4.67	0.26	134.32	134.62	134.474	5.51	7.48	7.49	7.485	0.31
ULSD	Houston	Brownsville	-	-	-	-	-	116.77	116.87	116.819	1.75	6.50	6.50	6.502	0.10
Reg Unl 87	Houston	Monterrey	10.0	1.61	0.09	-	-	138.62	138.92	138.766	5.63	7.72	7.73	7.724	0.31
Prem Unl 91	Houston	Monterrey	10.0	1.61	0.09	4.67	0.26	143.28	143.58	143.432	5.51	7.97	7.99	7.983	0.31
ULSD	Houston	Monterrey	-	-	-	-	-	126.20	126.30	126.249	1.75	7.02	7.03	7.027	0.10
Reg Unl 87	Houston	San Luis Potosí	10.0	1.61	0.09	-	-	145.43	145.73	145.575	5.63	8.09	8.11	8.103	0.31
Prem Unl 91	Houston	San Luis Potosí	10.0	1.61	0.09	4.67	0.26	150.09	150.39	150.242	5.51	8.35	8.37	8.362	0.31
ULSD	Houston	San Luis Potosí	-	-	-	-	-	133.37	133.47	133.417	1.75	7.42	7.43	7.426	0.10
Reg Unl 87	Corpus C	San José Iturbide	10.0	1.61	0.09	-	-	140.37	140.67	140.519	5.63	7.81	7.83	7.821	0.31
Prem Unl 91	Corpus C	San José Iturbide	10.0	1.61	0.09	4.67	0.26	145.04	145.34	145.186	5.51	8.07	8.09	8.081	0.31
ULSD	Corpus C	San José Iturbide	-	-	-	-	-	128.04	128.14	128.094	1.75	7.13	7.13	7.130	0.10

Oxygenates Landed Spot Prices

PRODUCT	SOURCE	DESTINATION	US\$/gal				MXN\$/L			
			LOW	HIGH	MEAN	+/-	LOW	HIGH	MEAN	+/-
RAIL										
MTBE	Houston	Monterrey	152.23	154.23	153.226	0.00	8.47	8.58	8.528	0.00
MTBE	Houston	Guadalajara	175.06	177.06	176.060	0.00	9.74	9.85	9.799	0.00
WATERBORNE										
MTBE	USGC	East Coast Mexico	130.16	132.16	131.162	0.00	7.24	7.36	7.300	0.00

Mexico Freight Rates



Shipping Notes

- Freight rates on Wednesday were unchanged as Mexico was on holiday to celebrate Independence Day. The USG/EC Mexico was flat at an assessed value of \$155K (\$4.08/mt) basis 38,000-mt cargo size. USGC/Rosarito held at an assessed \$1M (\$26.32/mt). The USWC/Rosarito was steady at an assessed value at of \$225K (\$5.92/mt) basis 38,000-mt cargo.
- Cargoes in the Gulf of Mexico remain elusive as storms continue to batter the USGC and refineries stop and start. Finished motor gasoline exports from the U.S. were down for the week ending Sept. 11, according to the U.S. Energy Information Administration's latest weekly petroleum report. The U.S. averaged 506,000 b/d for that week, compared with 709,000 b/d the previous week. At this time last year, finished motor gasoline exports from the U.S. were around 692,000 b/d. Cargoes through the first half of September appeared to be light, according to IHS Markit's Commodities at Sea. There were seven gasoline cargoes to Mexico from the U.S. during first half of September. During August, there were a total of 26 cargoes. The data also shows there are eight cargoes in transit. In 2019, the data shows only 11 cargoes moved in September and 31 during August.

Americas Clean Freight Rates (US\$)

ROUTE	SIZE '000T	LOW	HIGH	MEAN	+/-	US \$/T
USGC-East Coast Mexico	38	150,000	160,000	155,000	0	4.08
USGC-Lázaro Cárdenas	38	840,000	860,000	850,000	0	22.37
USGC-Topolobampo	19	-	-	-	-	26.32
USGC-Guaymas	12	-	-	-	-	28.62
USGC-Rosarito	38	990,000	1,010,000	1,000,000	0	26.32
USWC-Lázaro Cárdenas	38	365,000	385,000	375,000	0	9.87
USWC-Topolobampo	19	-	-	-	-	9.87
USWC-Guaymas	12	-	-	-	-	12.17
USWC-Rosarito	38	215,000	235,000	225,000	0	5.92

Americas Rail Rates (September)

ROUTE	GASOLINE		ULSD		MTBE	
	cts/gal	+/-	cts/gal	+/-	cts/gal	+/-
Corpus Christi-San Jose Iturbide	23.57	-0.25	24.81	-0.26	-	-
Houston-Brownsville	12.86	-0.31	13.54	-0.33	-	-
Houston-Guadalajara	-	-	-	-	46.06	0.07
Houston-Monterrey	21.82	-0.29	22.97	-0.31	23.23	0.02
Houston-San Luis Potosi	28.63	-0.26	30.14	-0.27	-	-

OPIS Renewable Volume Obligation

PRODUCT	YEAR	US\$/GAL	+/-	MXN\$/L	+/-
RVO	2020	6.915	-0.084	0.385	-0.005

IEPS Fiscal Stimulus (week ending Sep 18)

	REGULAR	PREMIUM	DIESEL
Deductions	4.950	4.180	5.440

Pemex Wholesale Prices vs OPIS U.S. Gulf Coast Spot Price Spread (MXN \$/L)

TERMINAL	REGULAR		PREMIUM		ULSD		TERMINAL	REGULAR		PREMIUM		ULSD	
	PEMEX	SPRD	PEMEX	SPRD	PEMEX	SPRD		PEMEX	SPRD	PEMEX	SPRD	PEMEX	SPRD
Acapulco	16.34	9.69	16.44	9.40	16.51	10.53	Mexicali	16.54	9.89	16.61	9.57	17.08	11.10
Aguascalientes	16.55	9.89	16.65	9.61	16.80	10.82	Minatitlán	15.84	9.19	15.70	8.66	16.09	10.12
Añil	16.23	9.58	16.28	9.24	16.40	10.42	Monclova	16.23	9.58	16.09	9.05	16.70	10.72
Azcapotzalco	16.18	9.53	16.17	9.13	16.34	10.36	Morelia	16.58	9.93	16.44	9.40	16.83	10.85
Barranca Del Muerto	-	-	-	-	-	-	Navojoa	17.22	10.57	17.83	10.79	17.39	11.42
Cadereyta Jimenez	16.26	9.61	16.17	9.13	16.49	10.51	Nogales	17.85	11.20	17.95	10.91	17.82	11.84
Campeche	16.01	9.36	15.75	8.71	16.26	10.28	Nuevo Laredo	16.25	9.60	16.35	9.31	16.51	10.53
Celaya	16.56	9.91	16.42	9.38	16.81	10.84	Oaxaca	16.38	9.73	16.36	9.32	16.63	10.65
Chihuahua	16.50	9.85	16.60	9.56	16.91	10.93	Pachuca	16.25	9.60	16.35	9.31	16.50	10.52
Ciudad Juárez	16.06	9.41	16.16	9.12	16.03	10.05	Pajaritos	15.40	8.75	15.50	8.46	15.65	9.67
Ciudad Madero	15.40	8.75	15.50	8.46	15.65	9.67	Parral	16.91	10.26	17.02	9.97	17.29	11.31
Ciudad Mante	15.97	9.32	15.83	8.79	16.22	10.24	Perote	16.09	9.44	16.19	9.15	16.34	10.36
Ciudad Obregón	17.45	10.80	17.72	10.68	17.29	11.31	Poza Rica	16.01	9.36	16.11	9.07	16.26	10.28
Ciudad Valles	15.91	9.26	15.84	8.80	16.16	10.18	Progreso	15.63	8.98	15.73	8.69	15.88	9.90
Ciudad Victoria	16.08	9.43	15.72	8.68	16.33	10.35	Puebla	16.21	9.56	15.95	8.91	16.46	10.48
Colima	16.52	9.87	16.50	9.46	16.59	10.61	Querétaro	16.50	9.85	16.36	9.32	16.76	10.78
Cuatla	16.39	9.74	16.37	9.33	16.64	10.66	Reynosa	16.30	9.65	16.16	9.12	16.67	10.69
Cuernavaca	16.23	9.57	16.21	9.17	16.48	10.50	Rosarito	16.27	9.62	16.36	9.32	16.81	10.83
Culiacan	17.26	10.61	18.69	11.65	18.06	12.08	Sabinas	16.25	9.60	16.19	9.15	16.51	10.53
Durango	16.75	10.10	16.61	9.57	17.00	11.02	Salina Cruz	16.15	9.50	16.25	9.21	16.40	10.42
EL Castillo	16.70	10.05	16.64	9.60	16.83	10.85	Saltillo	16.23	9.58	16.17	9.13	16.64	10.66
Ensenada	16.48	9.83	16.52	9.48	17.02	11.04	San Luis Potosí	16.12	9.47	16.15	9.11	16.37	10.39
Escamela	16.03	9.38	16.01	8.97	16.28	10.30	Santa Catarina	16.33	9.68	16.24	9.20	16.61	10.63
Gomez Palacio	16.67	10.02	16.77	9.73	16.92	10.94	Tapachula	16.37	9.72	16.23	9.19	16.62	10.64
Guadalajara	16.70	10.05	16.61	9.57	16.83	10.85	Tepic	16.87	10.22	16.82	9.78	17.06	11.08
Guamúchil	17.14	10.49	18.57	11.53	17.94	11.96	Tierra Blanca	15.98	9.33	15.65	8.61	16.23	10.25
Guaymas	17.23	10.57	17.50	10.45	17.06	11.09	Toluca	16.42	9.77	16.40	9.36	16.67	10.69
Hermosillo	17.46	10.80	17.73	10.68	17.29	11.32	Topolobampo	16.91	10.26	18.34	11.30	17.71	11.73
Iguala	16.51	9.86	16.49	9.45	16.76	10.78	Tula	16.30	9.65	16.16	9.12	16.55	10.57
Irapuato	16.59	9.94	16.45	9.41	16.84	10.86	Tuxtla Gutiérrez	16.12	9.46	16.10	9.06	16.37	10.39
Jalapa	16.01	9.36	15.99	8.95	16.26	10.28	Uruapan	16.67	10.02	16.65	9.61	16.73	10.75
La Paz	16.53	9.88	16.56	9.52	16.85	10.87	Veracruz	15.40	8.75	15.50	8.46	15.65	9.67
Lázaro Cárdenas	15.97	9.32	16.07	9.03	16.04	10.06	Villahermosa	16.01	9.36	15.65	8.61	16.26	10.28
León	16.54	9.89	16.40	9.36	16.79	10.81	Zacatecas	16.54	9.89	16.64	9.60	16.79	10.81
Magdalena	17.85	11.20	17.95	10.91	17.81	11.83	Zamora	16.73	10.08	16.60	9.55	16.97	10.99
Manzanillo	15.97	9.32	16.07	9.03	16.04	10.06	Zapopan	16.70	10.05	16.61	9.57	16.83	10.85
Matamoros	16.67	10.02	16.77	9.73	16.92	10.94							
Matehuala	16.38	9.73	16.36	9.32	16.63	10.65							
Mazatlán	16.69	10.04	16.57	9.53	16.91	10.93							
Mérida	15.69	9.04	15.79	8.75	15.94	9.96							

OPIS Regional Refined Products Heat Maps

DIESEL FUEL: PEMEX/OPIS U.S. GULF COAST SPREAD (MXN \$/L)



REGULAR GASOLINE: PEMEX/OPIS U.S. GULF COAST SPREAD (MXN \$/L)



● 8.30 to 8.70 ● 8.71 to 9.11 ● 9.12 to 9.52 ● 9.53 to 9.93 ● 9.94 to 10.34

EDITORIAL CONTACTS

BEN BROCKWELL
Director – Data, Pricing and Information
 +1 732.730.2519
 ICE IM: bbrockwell1
 ben.brockwell@ihsmarkit.com

TOM KLOZA
Global Head – Energy Analysis
 +1 732.730.2558
 ICE IM: tkloza
 tom.kloza@ihsmarkit.com

STEVE TAN
VP – Strategic Content
 +65 6439.6271
 steve.tan@ihsmarkit.com

JENNIFER BRUMBACK
Director – Americas Refined Products and Renewables
 +1 727.202.6501
 ICE IM: jbrumback2
 jennifer.brumbback@ihsmarkit.com

LISA STREET
Associate Director – Americas Refined Products and Carbon
 +1 832.679.7225
 ICE IM: lstreet2
 lisa.street@ihsmarkit.com

MEXICO REFINED PRODUCTS

DANIEL RODRIGUEZ
 +52 8842.7354
 ICE IM: darodriguez
 daniel.rodriguez@ihsmarkit.com

JUSTIN SCHNEEWIND
 +1 281.531.8192
 ICE IM: jschneewind2
 justin.schneewind@ihsmarkit.com

U.S. GULF COAST

ANDREW ATWAL
 +1 301.284.1961
 ICE IM: aatwal
 andrew.atwal@ihsmarkit.com

CORY WILCHEK
 +1 301.284.2110
 ICE IM: cwilchek
 cory.wilchek@ihsmarkit.com

U.S. WEST COAST

BAYAN RAJI
 +1 832.679.7227
 ICE IM: braji1
 bayan.raji@ihsmarkit.com

KYLEE WEST
 +1 301.284.2108
 ICE IM: kwest
 kylee.west@ihsmarkit.com

MARKET NEWS COVERAGE

DENTON CINQUEGRANA
FRANK TANG
BRAD ADDINGTON

BETH HEINSOHN
STEVE CRONIN

MEXICO OFFICE

Insurgentes Sur 1431
 Piso 9 Oficina 2
 Colonia Insurgentes Mixcoac
 Ciudad de Mexico C.P 03920

AMERICAS OFFICE

1401 Enclave Parkway, Suite 500
 Houston, TX 77077
 Tel: +1 301.284.2000

SUBSCRIPTION INFORMATION

If you would like to subscribe to OPIS Mexico Fuels, call 888.301.2645 (U.S. only), +1 301.284.2000, or email energycs@opisnet.com



Philips 66: Alliance Refinery Turnaround Advanced by Two Weeks

The Phillips 66 Alliance refinery in southeast Louisiana -- shut on a precautionary basis ahead of Hurricane Sally -- will stay down and begin planned maintenance several weeks earlier than planned, the company said Wednesday.

The storm had no direct impact on the 269,140--b/d refinery in Belle Chasse, Louisiana, Phillips 66 said in its latest storm update. The plant was taken through a controlled shutdown Sept. 13-14.

"Phillips 66 can confirm that our Alliance Refinery is preparing to begin planned maintenance work originally slated for October, during which much of plant operations will remain down in order to conduct the work safely," the notice said, declining to comment on the units involved and the duration of the work.

Meanwhile, the amount of offshore Gulf of Mexico crude oil and natural gas production shut in by Sally -- now a tropical storm -- exceeded 25% as of midday Wednesday.

The federal Bureau of Safety and Environmental Enforcement (BSEE) has reported that shut-in offshore production of crude oil stands at 508,366 b/d (or about 27.5% of total offshore Gulf of Mexico output) and roughly 805 million cubic feet per day (nearly 30% of the total) of natural gas production was shut in.

The number of offshore platforms evacuated ahead of the storm has fallen by 30, to 119, BSEE noted, indicating that companies have begun to return personnel to the facilities.

Hurricane Sally made landfall early Wednesday as a Category 2 storm near Gulf Shores, Alabama, bringing high winds and flooding to parts of Alabama and Florida.

As of 1 p.m. Central time, now-Tropical Storm Sally, was 30 miles north-northeast of Pensacola, Florida, according to the National Hurricane Center, and still dumping prodigious amounts of rain. It is expected to move across the western Florida Panhandle and southeastern Alabama through early Thursday, over central Georgia on Thursday and South Carolina on Thursday night.

As reported on Tuesday, Chevron's 375,200-b/d refinery in Pascagoula, Mississippi, planned to continue operations through the storm, according to a person familiar with the facility, as did Shell Chemical LP's 90,600-b/d Mobile refinery in Saraland, Alabama.

--Reporting by Beth Heinsohn, bheinsohn@opisnet.com;
 Editing by Barbara Chuck, bchuck@opisnet.com