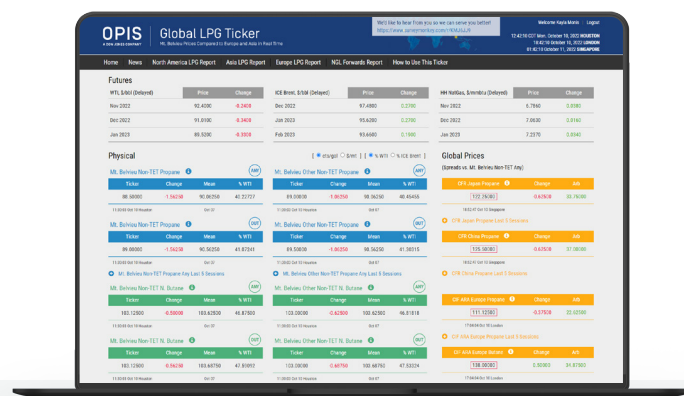


Get real-time pricing for the global LPG market

See international LPG prices in relation to OPIS benchmark Mt. Belvieu assessments in real time all day long.



Market Challenge

Mt. Belvieu is one of the most liquid LPG markets in the world, and has become the international pricing benchmark. The Panama Canal opening in 2016 created faster shipping routes and further enhanced Mt. Belvieu's global importance. At the same time, shale has made the U.S. LPG price even cheaper, allowing more exports to other countries. So the need for real-time price transparency between the United States and the rest of the world has never been greater.

How We Help

The OPIS Global LPG Ticker helps you see pricing relative to Mt. Belvieu around the clock in the way you look at the market: cents per gallon or dollars per metric ton.

Benefits

- See live relationships among propane, butane and ethane in all major spot markets
- Remove the effort from manual LPG volume conversions
- Chart the profitability of LPGs versus live crude futures values
- Track recent LPG performance with dynamic charts
- Understand what's driving spot pricing

Who We Help

- Traders
- PetChem
- Producers
- Gas Processors

Commodities

- Liquefied
- Petroleum Gas

Market Segment

- Spot

Request a demo

888.301.2645 | 301.284.2000
energycs@opisnet.com

Key Feature	Benefit to Customer
Real-Time Scoreboard	<ul style="list-style-type: none">• See active trading to discern real-time value
Real-Time Arbitrage	<ul style="list-style-type: none">• Determine import/export cost-effectiveness
Real-Time Arbitrage	<ul style="list-style-type: none">• Reconcile ticking prices with the official Mt. Belvieu benchmark
Single-Click Conversion from cts/gal to \$/metric ton	<ul style="list-style-type: none">• Convert to the proper volume and monetary value with ease
Crude % Conversion	<ul style="list-style-type: none">• Converts your product into the percentage of crude of your choice
Price Sourcing	<ul style="list-style-type: none">• The most extensive price sourcing available, from the U.S. to Europe to Asia

