

## WHO WE HELP

- Traders
- Marketers
- Suppliers
- C-Store Owners
- Fleets

## COMMODITIES

- Crude
- Gasoline
- Diesel
- Jet Fuel
- Ethanol
- RINs

## Track real-time spot price moves for key commodities in all U.S. markets for more profitable fuel transactions

The OPIS Spot Ticker allows you to assess the value of gasoline, diesel and jet fuel as they trade, from your desk or on the road. It also includes daily closing ethanol spot prices in nine key markets with twice-a-day (mid-day and closing) in Chicago.

### Market Challenge

NYMEX oil futures fluctuate wildly on domestic and global events. This affects the physical spot refined product market, which spikes and dives on any supply chain disruption. At 6pm every day, spot price moves directly translate to increases or reductions at the wholesale rack, which ripple down to prices at the pump.

### How We Help

The OPIS Spot Ticker is the link that connects you to this price influence chain – in real-time, all day long. See live NYMEX prices alongside real-time spot trades and expert assessments of every grade of gasoline and diesel as well as jet fuel East of the Rockies and on the U.S. West Coast. Gain true visibility into the spot market at any given moment.

### Benefits

- Predict the direction of rack prices for more strategic fuel sales and purchases
- Protect your bottom line from surprise moves in the spot market
- Turn market volatility to your advantage
- Set the price of rack barrels and monitor rack netbacks
- Dispatch or delay trucks before rack prices increase or after they drop
- Access more OPIS data in one place than in any other product we offer

Key Feature

Benefit to Customer

Real-Time Pricing

- Forecast rack price moves before 6pm changes for proactive decision-making

NYMEX Spot Price

- See when NYMEX futures and spot cash prices disconnect

OPIS Deal Log

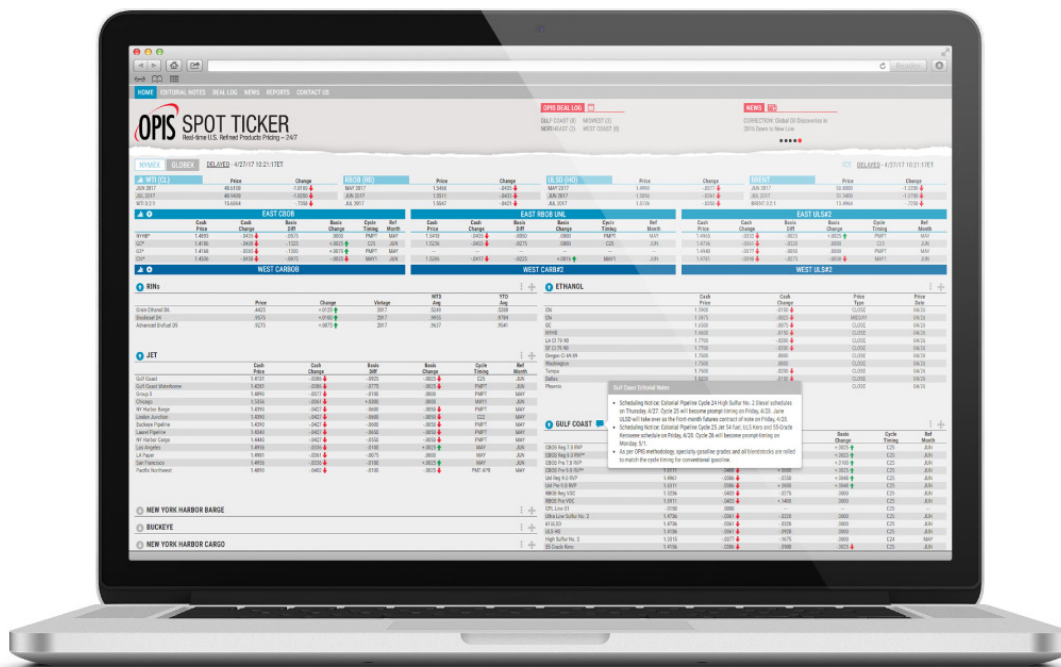
- Follow spot deals confirmed throughout the day, including product, volume, market, timing and cycle, with OPIS editorial notes

Ethanol Reports

- Benchmark renewable fuel pricing provides intraday updates of Chicago ethanol spot values, as well as ethanol, biodiesel and advanced biofuel RINs

Colonial Pipeline Line Space:

- Find up-to-the-minute line space pricing for the volatile Colonial Pipeline



For a **FREE** trial, call 888 301 2645 or 1 301 284 2000 | email [energysales@opisnet.com](mailto:energysales@opisnet.com)